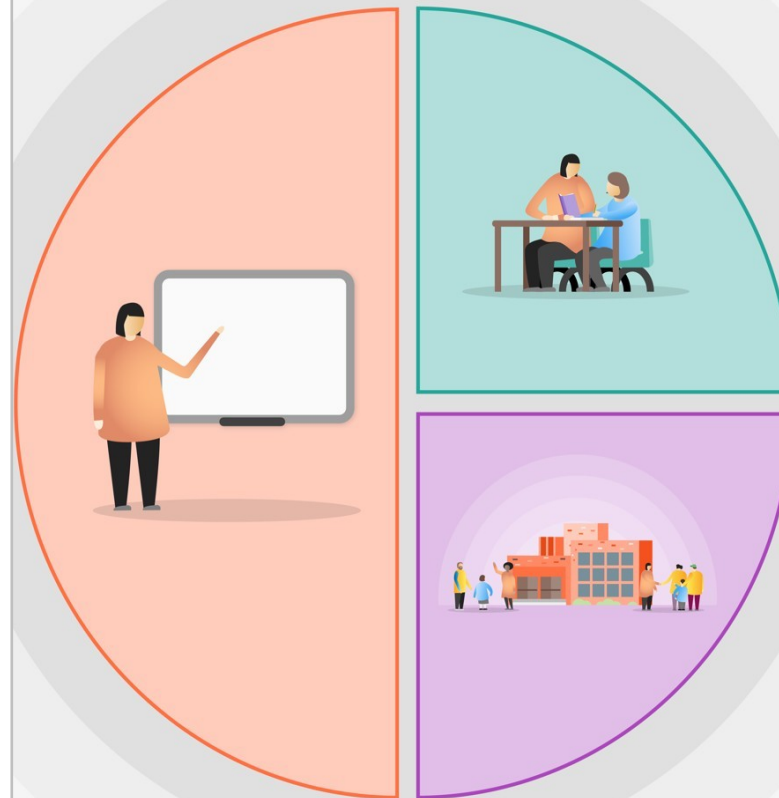




1 Teaching

- All staff to be aware of which students are eligible for the Pupil Premium
- Quality first teaching (QFT) and a high quality, well-sequenced challenging curriculum and Gaps analysis based on COVID school closure
- All staff to have high expectations for eligible students in a 'no excuses' culture
- Extending the school day for Y11 pupils and create a P6 sessions
- Invest in CAT4 testing in Year 7 and 8 to identify the students who are in greatest need of support
- Equip teaching staff with Chromebook to support remote learning
- Personal development week Year 10 and 11 to "bounce back"
- Re-structuring of the semester system
- Responsive teaching/low stakes quizzing, reducing teacher marking workload
- Ensure that all KS4 teachers are trained up in their exam specification
- Maintaining a broad, balanced and challenging curriculum across all Key Stages
- Assessment – Identify gaps in knowledge formed through school closure across all subject domains
- Students regarded as individuals rather than as a homogenous group
- Maintaining the breadth of the curriculum with specialist teaching spaces - Maintaining the breadth of the curriculum within a COVID secure school and also facilitating the teaching of specialist subjects whilst operating year group bubbles.



2 Targeted academic support

- Homework club
- 1:1 tutoring through My Tutor (+4 months)
- Raise achievement in literacy and numeracy through enhanced literacy support
- Contingency held for focused support through the National Tutoring Programme
- High quality careers advice and guidance
- Accelerator reader programme
- Transportation costs to support targeted pupils in Y11 to attend P6 provision (equality act 2010)
- Investment in professional counselling to be made available to this group

3 Wider strategies

- Technology and internet access
- Provide FSM food vouchers to isolating pupils
- Increased support for the attendance officer
- The Plympton Academy Achievement Voucher (£50) for Year 7's
- Academic and pastoral mentoring for all PP students.
- All disadvantaged students receive high quality individual academic, social and emotional mentoring through the Pastoral System Provision
- Provision of stationary equipment for PP students
- Enhanced communication with families by the advocated to forge positive relationships with school
- Revision guides supplied to PP exam group students
- Blended learning survey to establish pupil access to technology and internet access.

Pupil Premium 2020-21

Costs to deliver the programme 2020-21

Teaching

Enhanced maths and English provision £121,046
(includes Literacy co-ordinator and continuation of reduced class sizes in core subjects)

Accelerated reader programme £4,122

CAT4 testing in Years 7 and 8 £4,417

Targeted Academic support

Tutoring/mentoring (external) £12,695

Accelerated reader programme £4,122

Expanded Pastoral team £43,155

Other curriculum support £2,027

Extended TA support £ 43,557 (includes out of hours homework support)

Transport subsidy £1,507

Wider Strategies

Uniform subsidy/uniform items £3,166

HOY and Data Manager (time) £4,104

PPG Champion (time) £19,621

LAC specific support £21,846

Total £281,264

Pupil Premium Outcomes 2020-21

Below is a summary of results achieved by Pupil Premium students at key stage 4 (end of Y11) in 2020-21. (Due to the changes in awarding grades due to the pandemic, progress scores cannot be calculated for this cohort.)

Number of pupils in disadvantaged cohort	71
Attainment 8	48.33
EBacc entry: percentage of students entering the English Baccalaureate	21%
Attainment in English and maths: percentage of students achieving a grade 5 or above in English and maths.	45%
Attainment in English and maths: percentage of students achieving a grade 4 or above in English and maths.	65%