



# Student Guide to Transition 2025

Everything you need to know about joining  
Plympton Academy as a Year 7 student in 2025.

Written by Year 7 students.



**Erin**

*"I was really excited when I found out I was going to Plympton Academy. My sister goes here and really enjoys it and everyone I knew who came here have made so many new friends and love it here.*

*I was worried that my friends would find new friends and I would be on my own. I was also worried about getting lost or lots of late marks, but it has been the opposite.*

*So far, it has been awesome! I'm still friends with my primary friends and made many new close friends. If I was confused, all I had to do was ask, the teachers are incredibly helpful. Good luck for year 7! "*



**Samriddha**

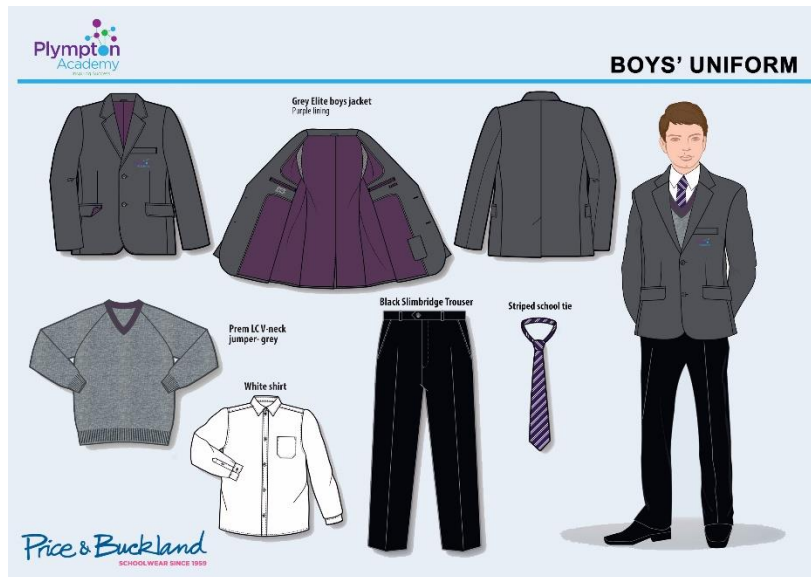
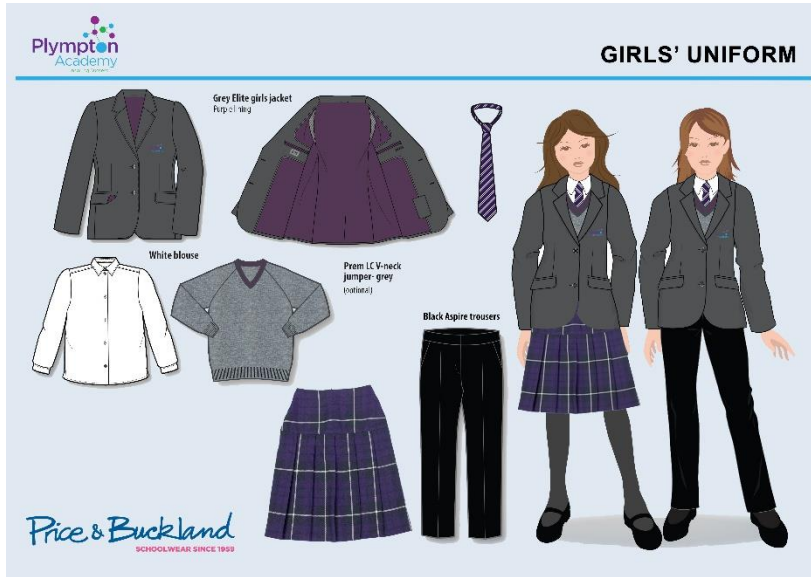
*"I was feeling very shy and worried that because I am Asian and from a different country, people would make fun of me. I did not know anyone when I started.*

*The people at school were very chill with me, but it took a while to make friends. Every staff is supportive and the pupils at this school are very kind and generous. Even the canteen has good food, my dad is a chef!*

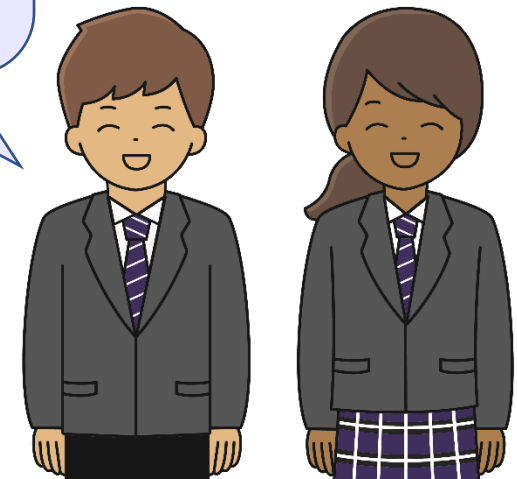
*When I had a computer error, a boy called Jack let me use his and, because of Jack, I have made many friends. Kind people are very common in this school."*

**We are a community –  
courageous, compassionate and curious about our world.**

# What uniform will I wear?



We thought it would be helpful to set this booklet out in order of your school day, so we are starting with your uniform!



# The school day and Period 1 Checks

The school day starts at 8.40am and finishes at 3.15pm.  
It is important to be in school **by 8.30am** each day.

Each day starts with a **line-up** to check our uniform and that we have our equipment for learning.

Our **tutor time** focuses on reading and learning about being our best selves. We can talk over any worries we have about the day ahead,

We have **five 1-hour lessons** and **two break times**. You can get food in both breaks.

After school and during breaks, there is a range of clubs to take part in.

Once a week we have a year group assembly.



## Equipment:

- Blue or Black pen
- Green pen
- Pencil and ruler
- Calculator
- Knowledge organiser
- Planner

## Uniform:

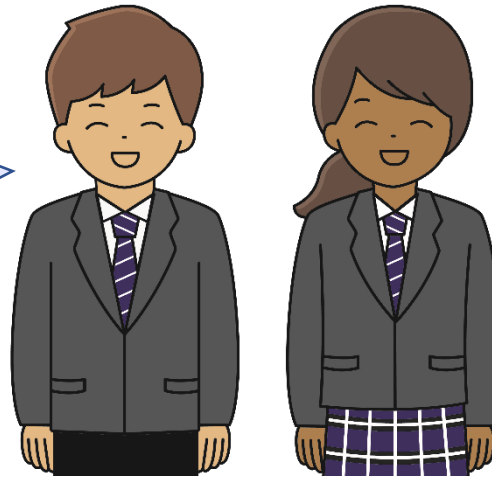
- Blazer on
- Shirt tucked in
- No leggings or jeans
- Black shoes
- Tie

Our tutors help us be organised for the day and check we have the things listed.



# School Map

One of our biggest worries was getting lost. The school site is probably bigger than your primary school and you have to *move from class to class!*



It was suggested we include a map, hopefully this will help. A more detailed version can be found on the school website.

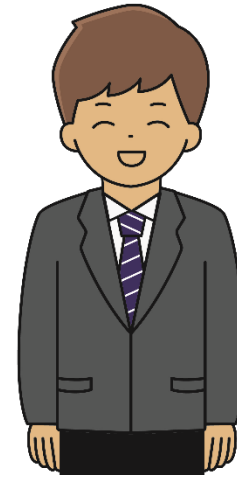


# Where will I go to eat?

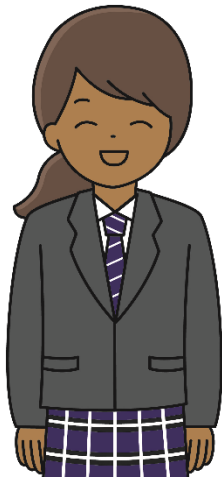


POD - Queue here

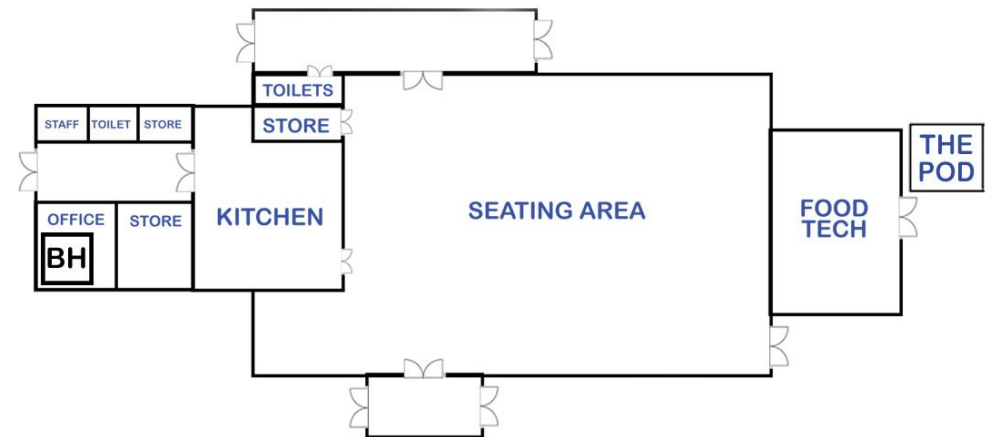
PAD - Entrance



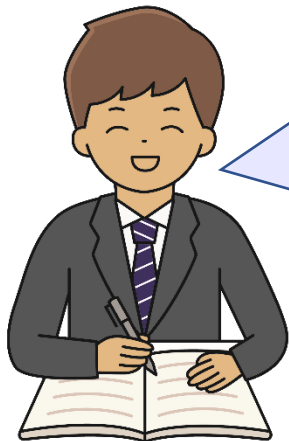
After getting lost, being able to get food and eat was the next big concern we had! Social time is important for you to be able to catch up with your friends and eat your lunch.



You can buy food at the PAD (Plympton Academy Diner) and the POD during both breaks. You can also eat your own food in the canteen.





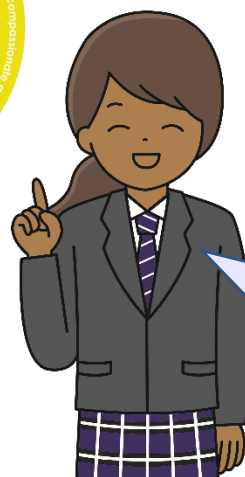


Every primary school will have used different systems to reward or sanction students.

At Plympton we are rewarded (or sanctioned) for both classroom and community behaviour.



***We are a community –  
courageous,  
compassionate and  
curious about our world.***



In January you will join one of 5 houses. Every time you are awarded a house point, your house gains a point and each week we celebrate the house with the most points!



# What is a tutor, a head of year and a pastoral mentor?

Your **tutor** is your point of contact for any communication between you, other teachers and home.

They are the person you speak to if...

- you are worried about something
- have forgotten something
- you need to take time out of school for appointments
- you want to share news

You are likely to have the same tutor from Year 7 to Year 9.

Your tutor is supported by the **Head of Year** and the **Pastoral Mentor**.

They have lots of jobs but their most important one is looking after you and making sure you are making good progress at school.

That sometimes means they have to be firm, but they always aim to be fair!

You will meet all these people on your Induction day in July and be placed in your tutor group.



You are now ready for secondary school and we can't wait to welcome you to our community!

